

AU OPTRONICS CORPORATION

Product Specification

15.0" XGA Color TFT-LCD Module

Model Name: G150XG01 V.0

Approved by	Prepared by
<i>ML Lee</i>	<i>Daniel Chi</i>

GDBD Marketing Division / AU Optronics corporation

Customer	Checked & Approved by

Product Specification

15.0" XGA Color TFT-LCD Module Model Name: G150XG01 V.0

Final Specifications



Contents

1.0 HANDLING PRECAUTIONS	7
2.0 GENERAL DESCRIPTION	8
2.1 Display Characteristics.....	9
2.2 Functional Block Diagram	10
3.0 ABSOLUTE MAXIMUM RATINGS	11
4.0 OPTICAL CHARACTERISTICS	12
5.0 SIGNAL INTERFACE	16
5.1 Module Interface Connectors	16
5.2 Module Connector Pin Configuration	16
5.3 Backlight Connectors	17
5.4 Backlight Connector Pin Configuration	17
5.5 Signal Electrical Characteristics.....	17
5.6 Interface Timing Characteristics.....	19
5.7 Interface Timing Definition	20
6.0 PIXEL FORMAT IMAGE	21
7.0 POWER CONSUMPTION	22
8.0 POWER ON/OFF SEQUENCE	22
9.0 BACKLIGHT CHARACTERISTICS	23
9.1 Signal for Lamp connector.....	23
9.2 Parameter guide line for CCFL Inverter.....	23
10.0 VIBRATION, SHOCK, AND DROP	24
10.1 Vibration & Shock.....	24
10.2 Drop	24
11.0 ENVIRONMENT	25
11.1 Temperature and Humidity.....	25
11.2 Atmospheric Pressure	25
11.3 Thermal Shock	25
12.0 RELIABILITY	26
12.1 Failure Criteria.....	26
12.2 Failure Rate	26
12.3 CCFL Life.....	26
12.4 ON/OFF Cycle.....	26
13.0 SAFETY	27
13.1 Sharp Edge Requirements	27



13.2 Materials27

14.0 OTHER REQUIREMENTS27

 14.1 Smoke Free Design27

 14.2 National Test Lab Requirement.....27

15.0 LABEL28

16.0 CARTON PACKAGE.....28

17.0 MECHANICAL CHARACTERISTICS29



ii Record of Revision

Version and Date	Chapter	Old description	New Description	Remark					
1.0 Feb. 6, 2004	All	N/A	First Edition for Customers						
2.0 Aug.16, 2004	2.1	Anti-glare, hard coating (3H)	Anti-glare, hard coating (3H), low reflection	Surface treatment					
Aug.16, 2004	4.0	Min. 320 nits	Min. 300 nits	White Luminance @ CCFL 6.5mA					
Aug.16, 2004	9.2		Lamp life: 50,000 hrs (typ.) Ambient temp 20°C~35°C (with no wind)						
3.0 Sept. 23, 2005	2.0	N/A	This module conforming to RoHS directive is available starting from Q3 2005. Add shipping label figure						
	2.1	N/A	Weight 1150g (max)						
	2.1	Low reflection	Remove low reflection						
	2.1/4.0	Contrast Ratio 400:1 (typ)	Contrast Ratio 500:1 (typ)						
	3.0	Operating Humidity 20~80% Storage Humidity 5~95%	Operating Humidity 8~90% Storage Humidity 8~90% Update wet bulb temperature chart						
	4.0	N/A	Add optical characteristic notes						
	9.2	Lamp life typical 50,000 hrs	Lamp life minimum 50,000 hrs						
	2.0/15.0	Non green design label sample	Green Design (RoHS) version label sample						
4.0 Nov. 21, 2005	2.1	View Angle 60/60/40/60	View Angle 65/65/65/55						
		Color Gamut 60% (Typ.) of NTSC coverage	Color Gamut 65% (Typ.) of NTSC coverage						
	4.0	Optical Characteristics							
		Conditions	Min.	Typ.	Max.	Conditions	Min.	Typ.	Max.
		Horizontal CR ≥ 10				Horizontal CR ≥ 10			
		(Right)	50	60		(Right)	55	65	
		(Left)	50	60		(Left)	55	65	
		CR ≥ 5			-	CR ≥ 5			-
		(Right)	60	75		(Right)	65	75	
		(Left)	60	75		(Left)	65	75	
		Vertical CR ≥ 10				Vertical CR ≥ 10			
		(Upper)	30	40		(Upper)	55	65	
		(Lower)	50	60		(Lower)	45	55	
		CR ≥ 5			-	CR ≥ 5			-
		(Upper)	45	50		(Upper)	65	75	
		(Lower)	65	75		(Lower)	55	65	



	4.0	Raising Time Ton (10%-90%)	-	4	6	Raising Time	-	8.8	-	
		Falling Time Toff (90%-10%)	-	12	17	Falling Time	-	3.2	-	
		Raising + Falling	-	16	23	Raising + Falling	-	12	-	
		Red x	0.587	0.617	0.647	Red x	0.610	0.640	0.670	
		Red y	0.317	0.347	0.377	Red y	0.300	0.330	0.360	
		Green x	0.260	0.290	0.320	Green x	0.270	0.300	0.330	
		Green y	0.563	0.593	0.623	Green y	0.560	0.590	0.620	
		Blue x	0.118	0.148	0.178	Blue x	0.120	0.150	0.180	
		Blue y	0.070	0.100	0.130	Blue y	0.070	0.100	0.130	
		White x	0.283	0.313	0.343	White x	0.280	0.310	0.340	
		White y	0.299	0.329	0.359	White y	0.300	0.330	0.360	
		Note 3: Definition of Response time "Black" to "White" (falling time), "White" to "Black" (rising time)			Note 3: Definition of Response time "Full Black" to "Full White" (falling time), "Full White" to "Full Black" (rising time)					
5.0 Feb. 27, 2006	2.1	Description for Brightness Uniformity, Crosstalk, White Luminance			Move to Chapter 4.0					
	2.0	Product Shipping Label			Move to Chapter 15.0					
	15.0	Mechanical Characteristics			Move to Chapter 16.0					
5.1 Aug. 22, 2006	16.0				Add "16.0 Carton Package"					



1.0 Handling Precautions

- 1) Since front polarizer is easily damaged, pay attention not to scratch it.
- 2) Be sure to turn off power supply when inserting or disconnecting from input connector.
- 3) Wipe off water drop immediately. Long contact with water may cause discoloration or spots.
- 4) When the panel surface is soiled, wipe it with absorbent cotton or other soft cloth.
- 5) Since the panel is made of glass, it may break or crack if dropped or bumped on hard surface.
- 6) Since CMOS LSI is used in this module, take care of static electricity and insure human earth when handling.
- 7) Do not open nor modify the Module Assembly.
- 8) Do not press the reflector sheet at the back of the module to any directions.
- 9) In case if a Module has to be put back into the packing container slot after once it was taken out from the container, do not press the center of the CCFL Reflector edge. Instead, press at the far ends of the CFL Reflector edge softly. Otherwise the TFT Module may be damaged.
- 10) At the insertion or removal of the Signal Interface Connector, be sure not to rotate nor tilt the Interface Connector of the TFT Module.
- 11) After installation of the TFT Module into an enclosure (LCD monitor housing, for example), do not twist nor bend the TFT Module even momentary. At designing the enclosure, it should be taken into consideration that no bending/twisting forces are applied to the TFT Module from outside. Otherwise the TFT Module may be damaged.
- 12) Cold cathode fluorescent lamp in LCD contains a small amount of mercury. Please follow local ordinances or regulations for disposal.
- 13) Small amount of materials having no flammability grade is used in the LCD module. The LCD module should be supplied by power complied with requirements of Limited Power Source (2.11, IEC60950 or UL1950), or be applied exemption.
- 14) The LCD module is designed so that the CFL in it is supplied by Limited Current Circuit (2.4, IEC60950 or UL1950). Do not connect the CFL in Hazardous Voltage Circuit.



2.0 General Description

This specification applies to the 15.0 inch Color TFT-LCD Module G150XG01.

The display supports the XGA (1024(H) x 768(V)) screen format and 262,144 colors (RGB 6-bits data).

All input signals are 1 Channel LVDS interface compatible.

This module does not contain an inverter card for backlight.

This module conforming to RoHS directive is available starting from Q3 2005.

Features

- XGA 1024(H) x 768(V) resolution
- 50,000 hours lamp life
- 2 CCFLs (Cold cathode Fluorescent Lamp)
- High contrast ratio, high aperture ratio
- Wide viewing angle
- High-speed response
- Low power consumption

Application

Industrial Applications



2.1 Display Characteristics

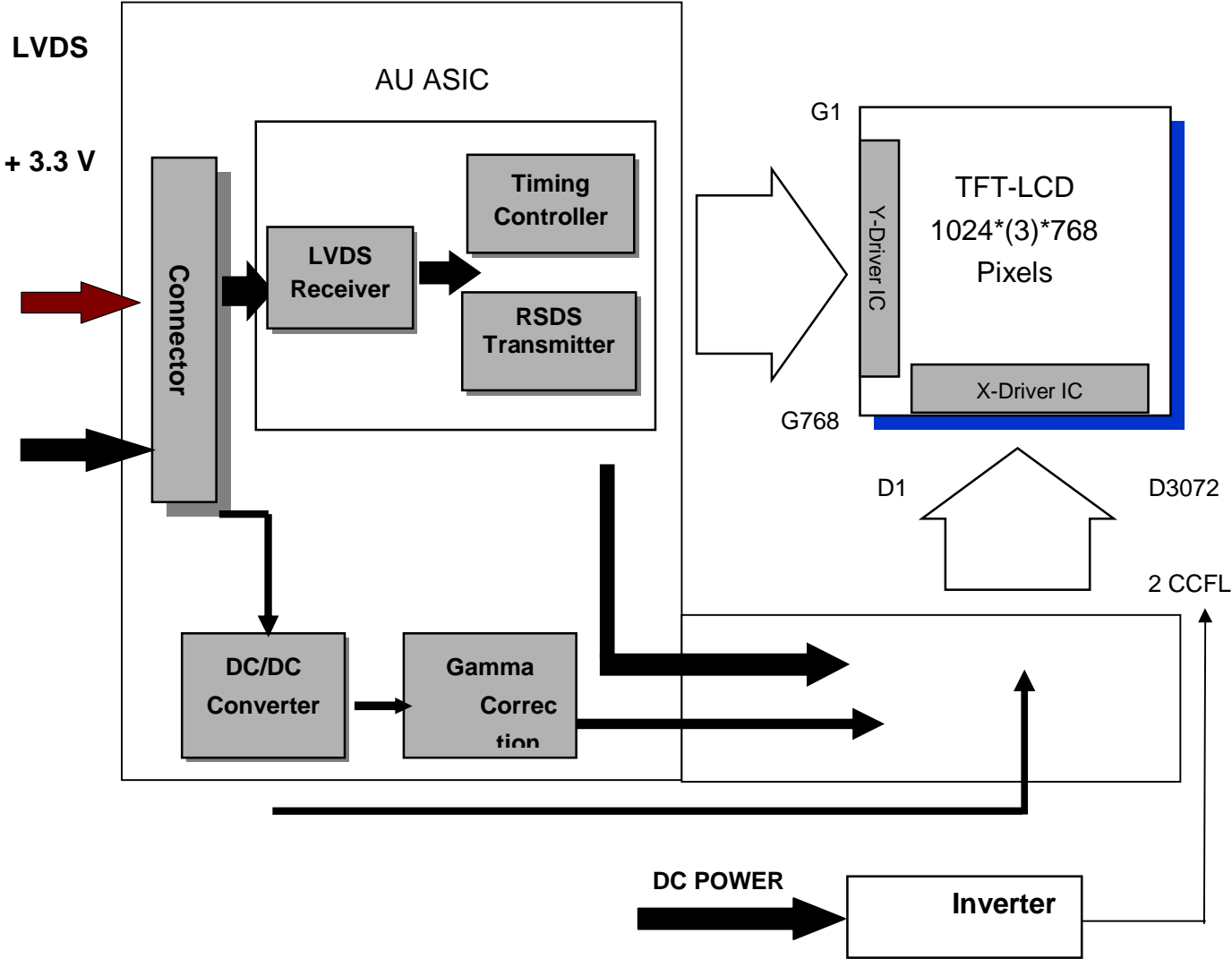
The following items are characteristics summary on the table under 25 °C condition:

ITEMS	Unit	SPECIFICATIONS
Screen diagonal	[mm]	381 (15")
Outline dimension	[mm]	326.5 (Typ.) x 253.5 (Typ.) x 12.0 (Max.)
Display Area	[mm]	304.128 (H) x 228.096(38.1cm diagonal)
Resolution		1024(R,G,B x 3) x 768
Pixel Pitch	[mm]	0.297 x 0.297
Pixel Arrangement		R.G.B. Vertical Stripe
Display Mode		TN mode, Normally White
Typical white Luminance.	[cd/m ²]	350nit (Typ.) @ 6.5mA
Contrast Ratio		500 : 1 (Typ.)
Support Colors		262,144 colors (6-bit for R,G,B)
Chromaticity(CIE1931)		
White-x		0.313
White-y		0.329
Color Gamut		65% (Typ.) of NTSC coverage
Viewing angle (L/R/U/D)		65/65/65/55 (CR _≥ 10)
Response Time	[msec]	12ms (Typ.) (Tr +Tf)
Nominal Input Voltage VDD	[Volt]	+3.3 V
Power Consumption (VDD line + CCFL line)	[Watt]	11.5 W (Typ.) @6.5mA (All Black Pattern)
Electrical Interface		LVDS (1 Ch)
Frame rate	[Hz]	60Hz (Typ.), 75Hz (Max.)
Weight	[Grams]	1100 (Typ.) 1150 (Max.)
Mounting method		Side mounting
Surface treatment		Anti-glare, hard coating (3H)
Temperature Range		
Operating	[°C]	0 to +50
Storage (Shipping)	[°C]	-20 to +60



2.2 Functional Block Diagram

The following diagram shows the functional block of 15.0 inches Color TFT-LCD Module:



DF-14H-20P-1.25H (Hirose)
CWY20G-A0D1T (PTWO)

JST BHR-03VS-1



3.0 Absolute Maximum Ratings

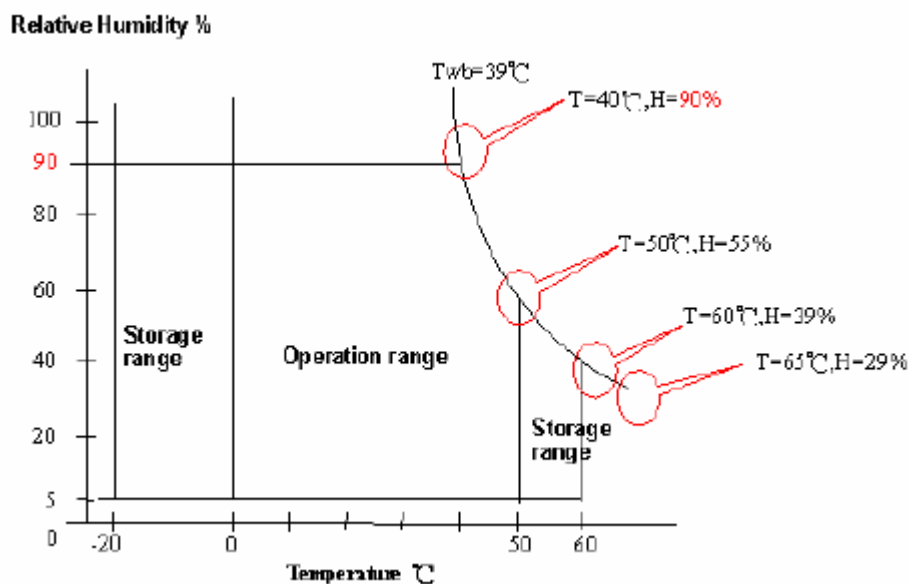
Absolute maximum ratings of the module is as following:

Item	Symbol	Min	Max	Unit	Conditions
Logic/LCD Drive Voltage	VDD	-0.3	+3.6	[Volt]	
Input Voltage of Signal	Vin	-0.3	+3.6	[Volt]	
CCFL Current	ICFL	2.5	8.5	[mA] rms	Note 1
Operating Temperature	TOP	0	+50	[°C]	Note 2
Operating Humidity	HOP	8	90	[%RH]	Note 2
Storage Temperature	TST	-20	+60	[°C]	Note 2
Storage Humidity	HST	8	90	[%RH]	Note 2
Vibration		-	1.5 / 10-200	[G / Hz]	
Shock		-	50/20	[G / ms]	Half sine wave

Note 1: CCFL life time will drop dramatically if exceeding 6.5 mA; It will have safety concern if exceeding 8.5 mA.

Note 2: Maximum Wet-Bulb should be 39°C and No condensation.

Note 3: For quality performance, please refer to AUO IIS (Incoming Inspection Standard). Please refer to the graph below for corresponding of temperature and humidity.

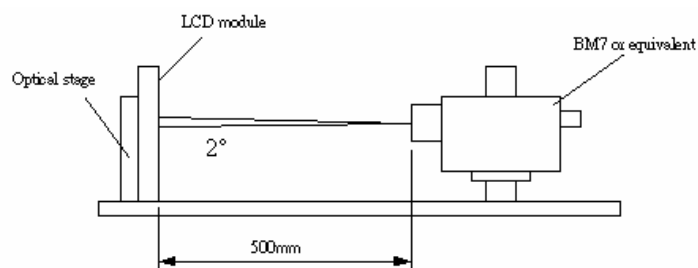


Wet bulb temperature chart



4.0 Optical Characteristics

Optical characteristics are determined after the unit has been 'ON' and stable for approximately 30 minutes in a dark environment at 25°C. The values specified are at an approximate distance 50cm from the LCD surface at a viewing angle of Φ and θ equal to 0°.

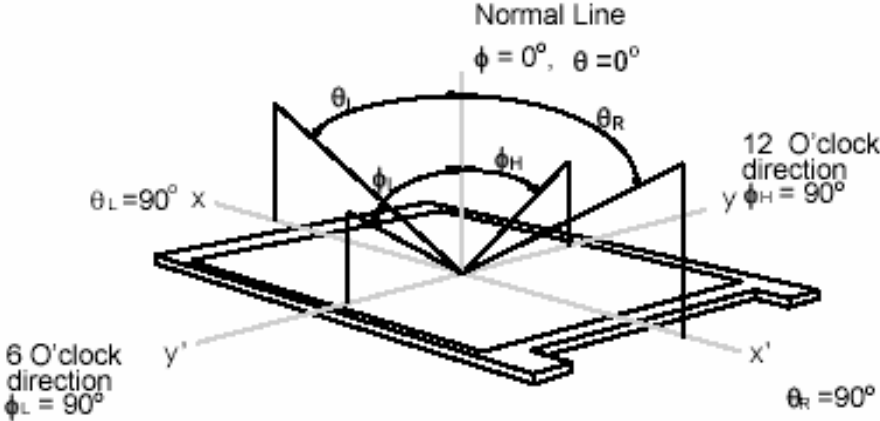


Item	Unit	Conditions	Min.	Typ.	Max.	Note
Viewing Angle	[degree]	Horizontal (Right)	55	65	-	1
		CR ≥ 10 (Left)				
		(Right)	65	75		
		CR ≥ 5 (Left)	65	75		
	[degree]	Vertical (Upper)	55	65	-	
		CR ≥ 10 (Lower)	45	55		
		(Upper)	65	75		
		CR ≥ 5 (Lower)	55	65		
Contrast ratio		Normal Direction	400	500	-	2
Response Time(Note 1)	[msec]	Raising Time	-	8.8	-	3
	[msec]	Falling Time	-	3.2	-	
	[msec]	Raising + Falling	-	12	-	
Color / Chromaticity Coordinates (CIE)		Red x	0.610	0.640	0.670	
		Red y	0.300	0.330	0.360	
		Green x	0.270	0.300	0.330	
		Green y	0.560	0.590	0.620	
		Blue x	0.120	0.150	0.180	
		Blue y	0.070	0.100	0.130	
Color Coordinates (CIE) White		White x	0.280	0.310	0.340	
		White y	0.300	0.330	0.360	
Brightness Uniformity	[%]		75	80	-	4,6
Crosstalk (in 60Hz)	[%]		-	-	1.2	5
White Luminance @ CCFL 6.5mA	[cd/m ²]		300	350	-	6

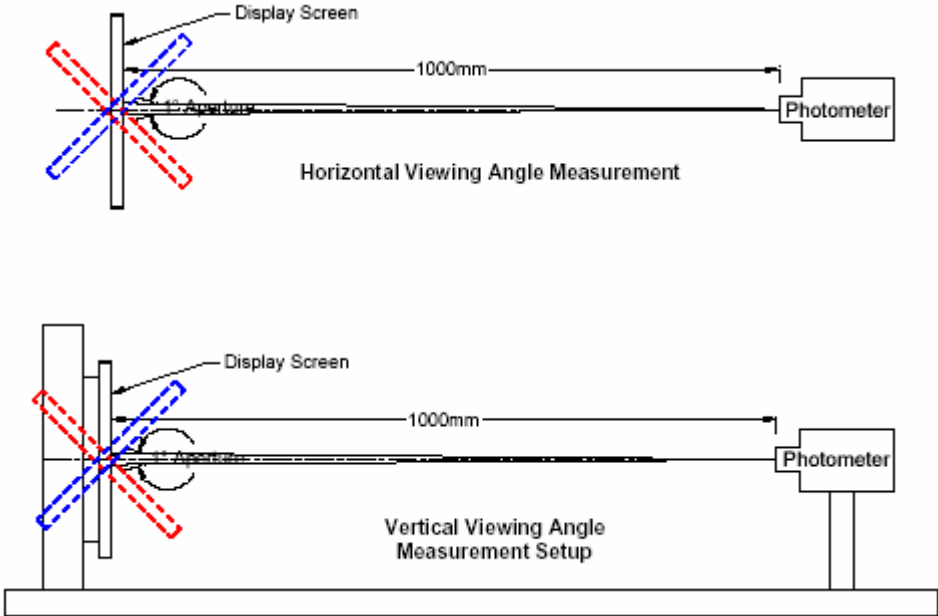


Note 1. Viewing Angle:

Viewing angle is the measurement of contrast ratio, at the screen center, over a 180° horizontal and 180° vertical range (off-normal viewing angles). The 180° viewing angle range is broken down as follows; 90° (θ) horizontal left and right and 90° (Φ) vertical, high (up) and low (down). The measurement direction is typically perpendicular to the display surface with the screen rotated about its center to develop the desired measurement viewing angle.



Viewing Angle Definition



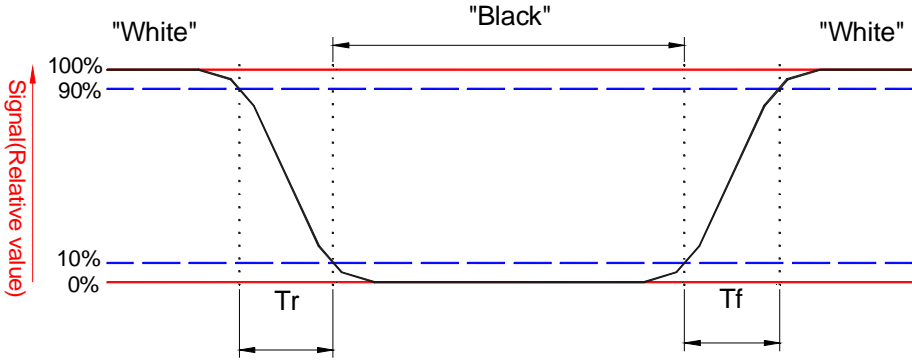


Note 2: Contrast Ratio (CR) is defined mathematically as:

$$\text{Contrast ratio (CR)} = \frac{\text{Brightness on the "white" state}}{\text{Brightness on the "black" state}}$$

Note 3: Definition of Response time:

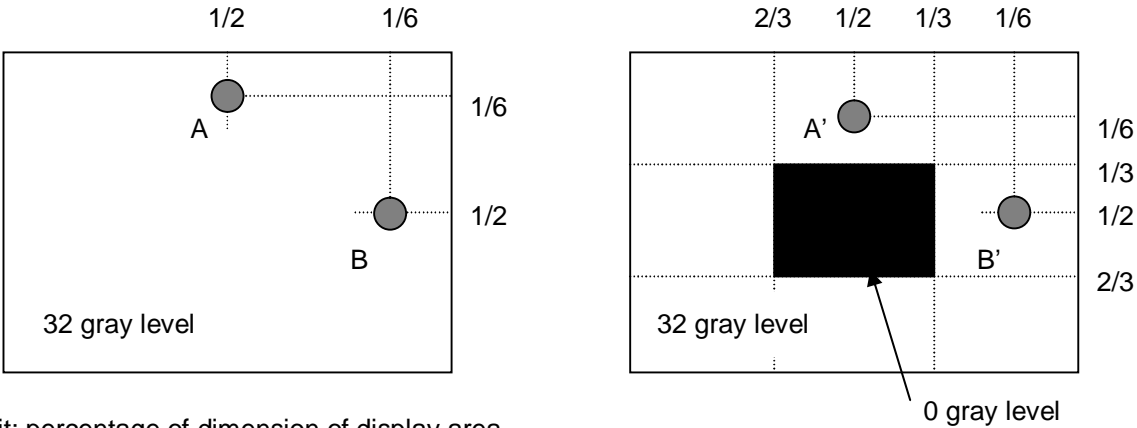
The output signals of photo detector are measured when the input signals are changed from "Full Black" to "Full White" (falling time), and from "Full White" to "Full Black" (rising time), respectively. The response time interval between the 10% and 90% of amplitudes. Refer to figure as below.



Response time

Note 4: Brightness uniformity of the 9 points is defined as below:
(Min. brightness / Max. brightness) x 100%

Note 5: Crosstalk is defined as below:



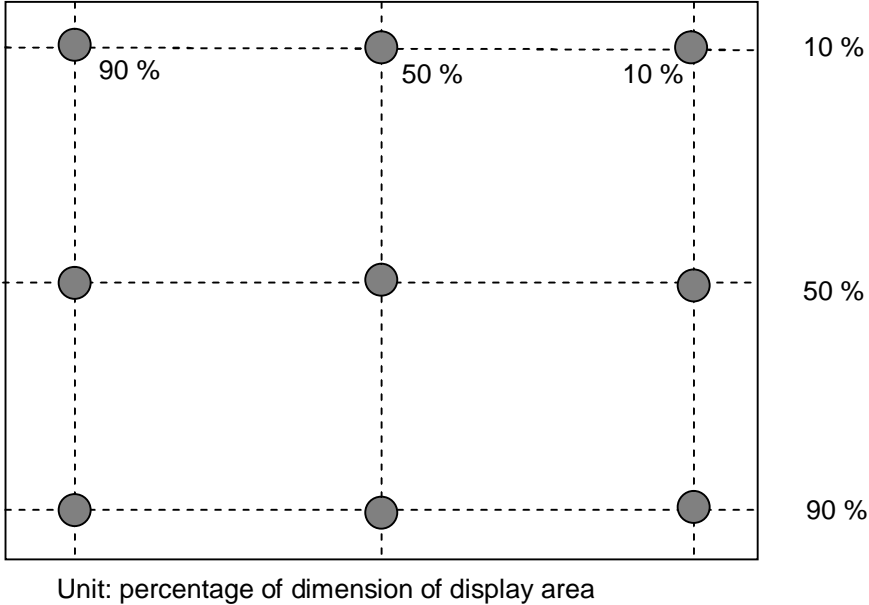
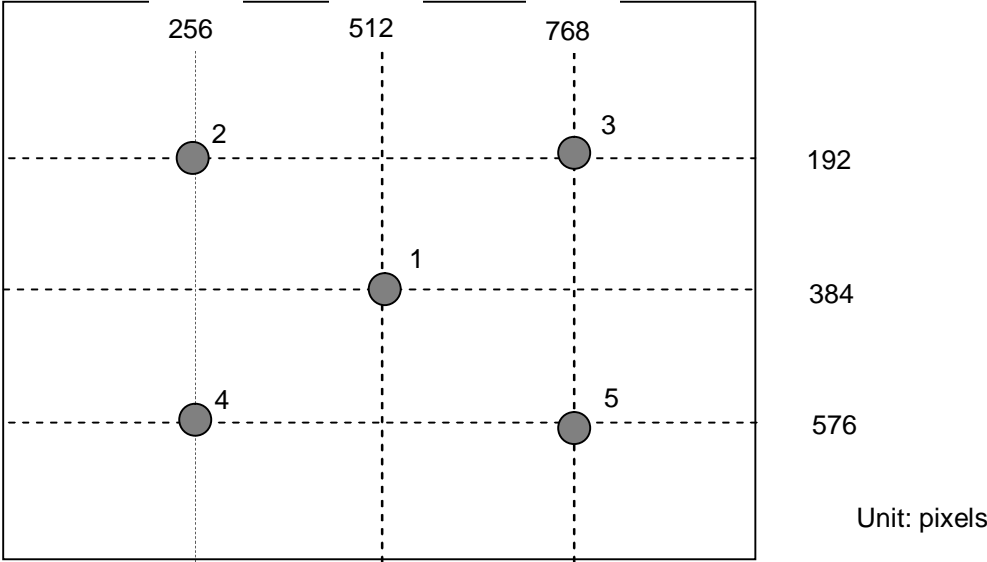
Unit: percentage of dimension of display area

$$|L_A - L_{A'}| / L_A \times 100\% = 1.2\% \text{ max.}, L_A \text{ and } L_B \text{ are brightness at location A and B}$$

$$|L_B - L_{B'}| / L_B \times 100\% = 1.2\% \text{ max.}, L_{A'} \text{ and } L_{B'} \text{ are brightness at location A' and B'}$$



Note 6: Brightness is measured at the center point of brightness value with all pixels displaying white.





5.0 Signal Interface

5.1 Module Interface Connectors

Physical interface is described as for the connector on module.

These connectors are capable of accommodating the following signals and will be following components.

Connector Name	Interface Connector
Manufacturer	Hirose, PTWO or compatible
Type / Part Number	DF-14H-20P-1.25H (Hirose) CWY20G-A0D1T (PTWO)

5.2 Module Connector Pin Configuration

DF-14H-20P-1.25H (Hirose) or CWY20G-A0D1T (PTWO)		
Pin No.	Symbol	Description
1	VDD	Power Supply, 3.3V (typical)
2	VDD	Power Supply, 3.3V (typical)
3	VSS	Ground
4	VSS	Ground
5	Rin0-	- LVDS differential data input (R0-R5, G0)
6	Rin0+	+ LVDS differential data input (R0-R5, G0)
7	VSS	Ground
8	Rin1-	- LVDS differential data input (G1-G5, B0-B1)
9	Rin1+	+ LVDS differential data input (G1-G5, B0-B1)
10	VSS	Ground
11	Rin2-	- LVDS differential data input (B2-B5, HS, VS, DE)
12	Rin2+	+ LVDS differential data input (B2-B5, HS, VS, DE)
13	VSS	Ground
14	ClKIN-	- LVDS differential clock input
15	ClKIN+	+ LVDS differential clock input
16	VSS	Ground
17	Rin3-	NC
18	Rin3+	NC
19	VSS	Ground
20	NC	Please *floating* and don't connect to ground.



5.3 Backlight Connectors

Connector Name / Designation	For Lamp Connector
Manufacturer	JST or compatible
Type / Part Number	BHR-03VS-1
Mating Type / Part Number	SM02(8.0)B-BHS-1-TB

5.4 Backlight Connector Pin Configuration

Pin	Symbol	Description
1	HV	Lamp High Voltage
2	NC	No connection
3	LV	Ground

- ⌌ Cable length: 140 +- 5 mm
- ⌌ Connector-output position: right side (front view)
- ⌌ Lamp assembly design shall be easy for replacement and repair.

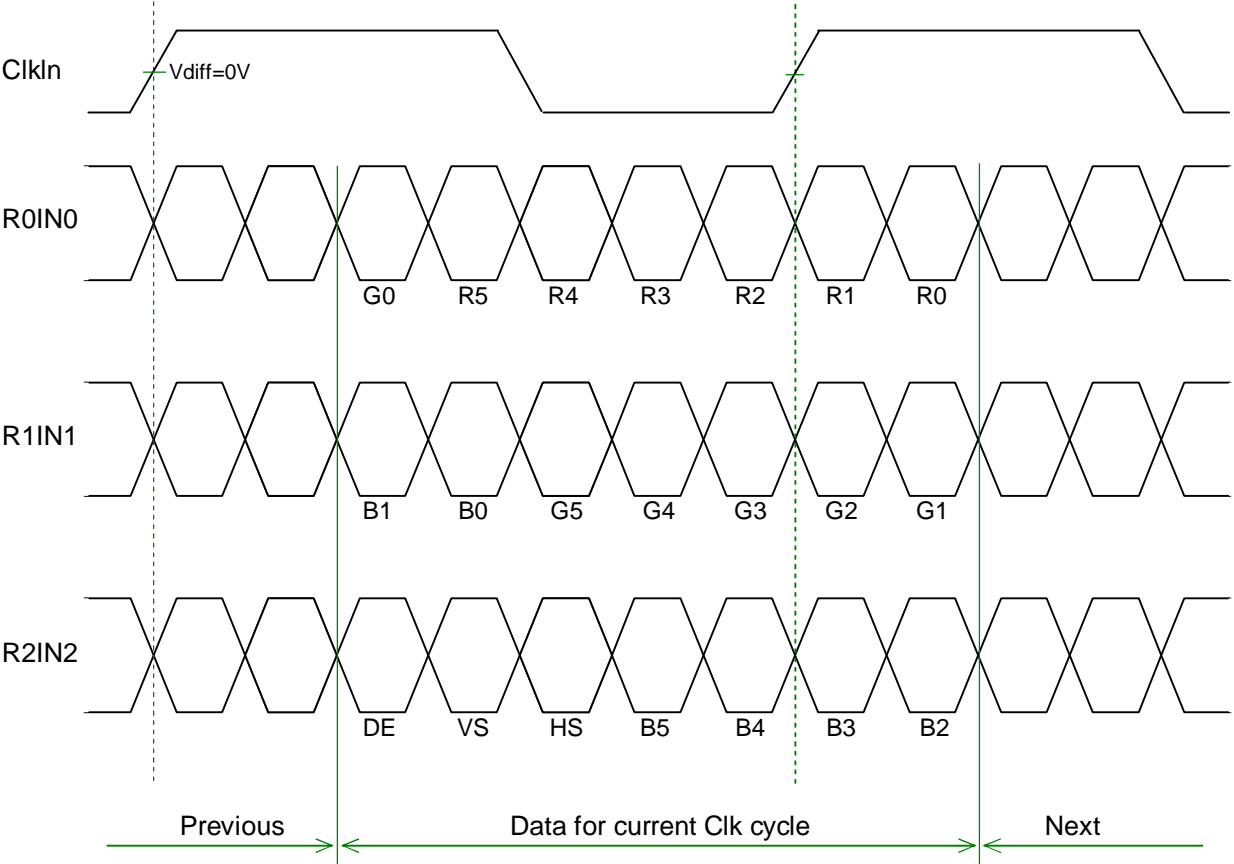
5.5 Signal Electrical Characteristics

Each signal characteristics are as follows;

Item	Symbol	Min	Typ	Max	Unit
LCD Drive voltage	VDD	+3.0	+3.3	+3.6	[V]
“High” input signal voltage	Vih	2.0	-	-	[V]
“Low” input signal voltage	Vil	-	-	0.8	[V]



6-bits input data format



Note: R/G/B data 5: MSB, R/G/B data 0: LSB

Input signals shall be low or Hi-Z state when Vin is off
 It is recommended to refer to the specifications of SN75LVDS82DGG (Texas Instruments) in detail.

Each signal characteristics are as follows:

Parameter	Condition	Min	Max	Unit
Vth	Differential Input High Voltage(Vcm=+1.2V)	-	+100	[mV]
Vtl	Differential Input Low Voltage(Vcm=+1.2V)	-100	-	[mV]



5.6 Interface Timing Characteristics

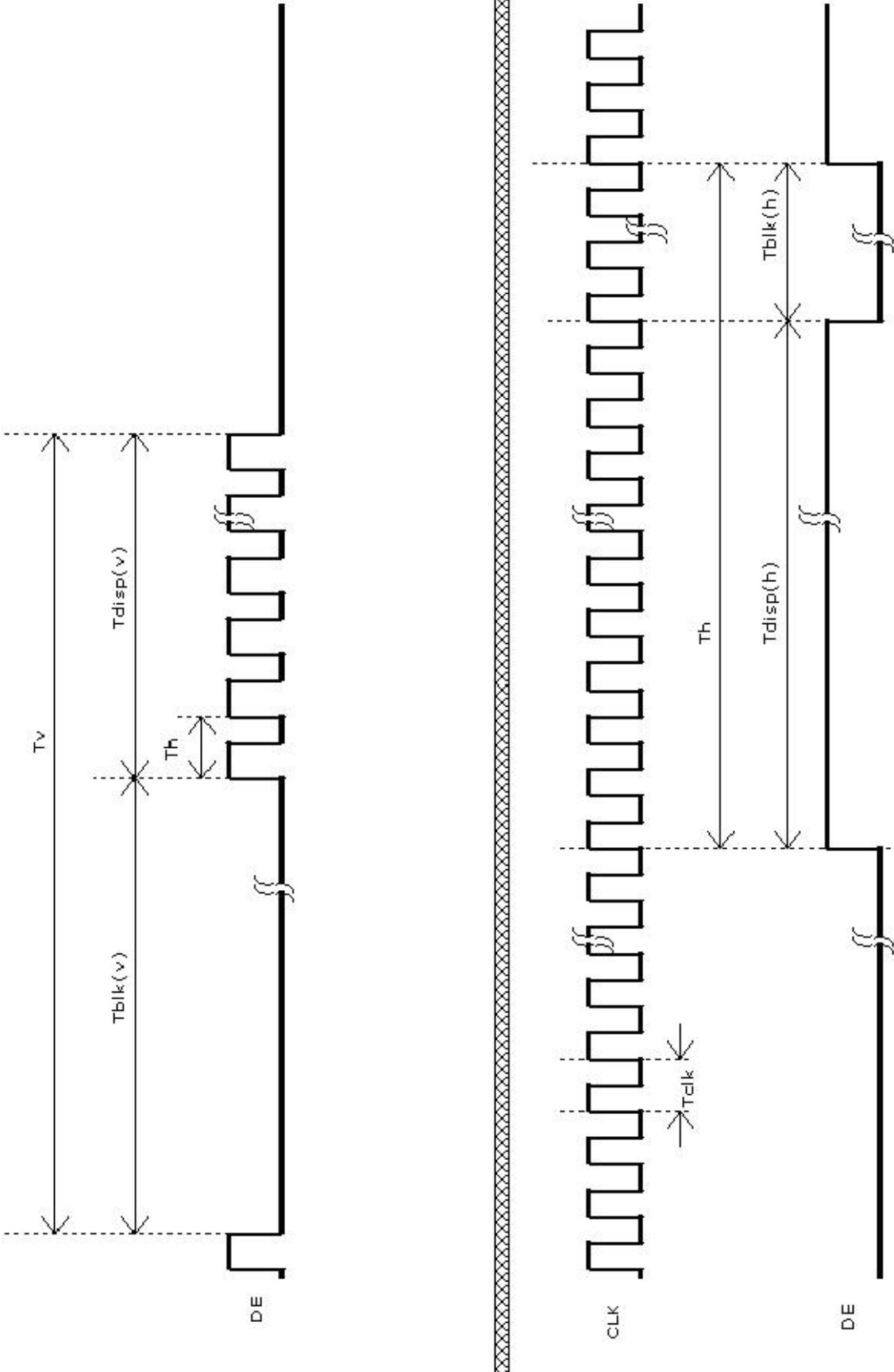
Basically, interface timings described here is not actual input timing of LCD module but output timing of SN75LVDS82DGG (Texas Instruments) or equivalent.

Signal	Parameter	Symbol	MIN	TYP	MAX	Unit
Clock Timing	Clock frequency	clk	50	65	81	MHz
Hsync Timing	Horizontal active	Thd	1024	1024	1024	Tclk
	Horizontal blanking	Thbl	30	320	1024	Tclk
	Horizontal period	Th	1054	1344	2048	Tck
Vsync Timing	Vertical active	Tvd	768	768	768	Th
	Vertical blanking	Tvbl	8	38	256	Th
	Vertical period	Tv	776	806	1024	Th

Note: Typical value refer to VESA STANDARD



5.7 Interface Timing Definition



(C) Copyright AU Optonics, Inc.
2006 All Rights Reserved.

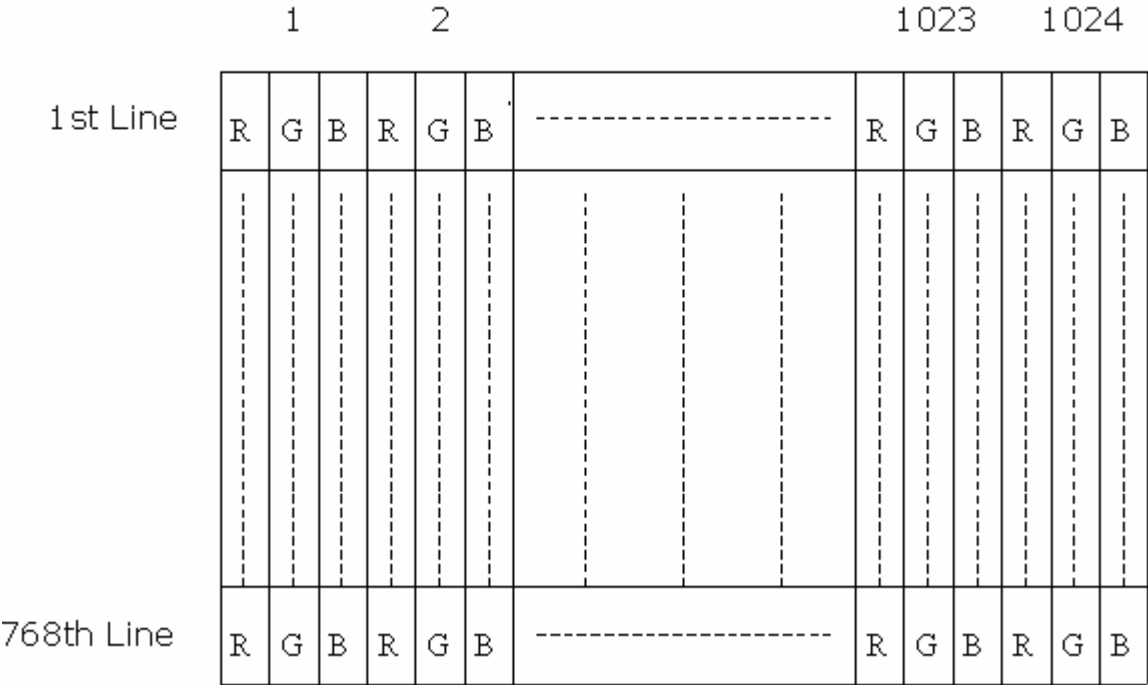
G150XG01 V.0
Spec version 5.1

No Reproduction and Redistribution Allowed



6.0 Pixel format image

Following figure shows the relationship of the input signals and LCD pixel format.





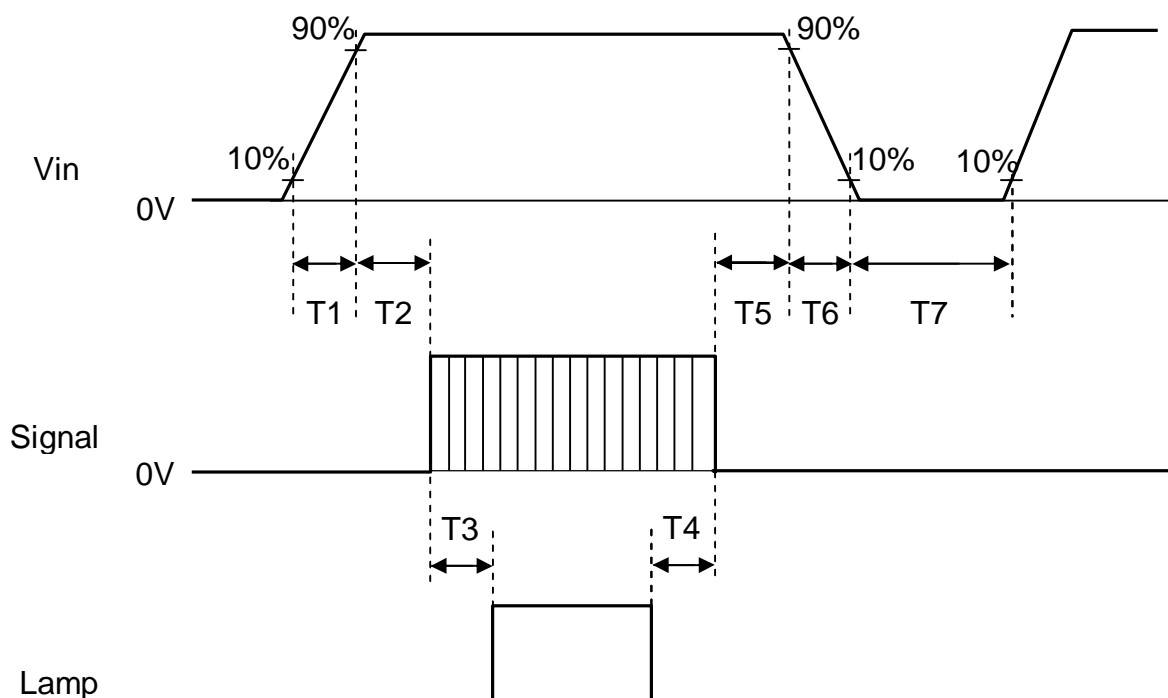
7.0 Power Consumption

Input power specifications are as follows:

Symbol	Parameter	Min	Typ	Max	Unit	Condition
VDD	LCD Drive Voltage	3.0	3.3	3.6	[V]	
IDD	LCD Drive Current	-	1.0	1.3	[A]	VDD=3.3V, All Black Pattern
PDD	LCD Drive power consumption	-	3.3	4.3	[Watt]	VDD=3.3V, All Black Pattern
VDDns	Allowable LCD Drive Ripple Noise	-	-	100	[mV] p-p	

8.0 Power ON/OFF Sequence

Vin and lamp power on/off sequence are as follows. The timing of interface signal are shown in the table below.



Symbol	Values			Unit
	Min	Typ	Max	
T1	0.5	-	10	[ms]
T2	0.5	25	50	[ms]
T3	200	-	-	[ms]
T4	200	-	-	[ms]
T5	0.5	16	50	[ms]
T6	0.5	-	10	[ms]
T7	1000	-	-	[ms]



9.0 Backlight Characteristics

9.1 Signal for Lamp connector

Pin #	signal Name
1	Lamp High Voltage
2	No connection
3	Ground

9.2 Parameter guide line for CCFL Inverter

Symble	Parameter	Min	Typ	Max	Units	Condition
IRCFL	CCFL operation range	2.5	6.5	8.5	[mA] rms	(Ta=25°C) Note 4
ICFL	CCFL Inrush current	-	-	20	[mA]	
FCFL	CCFL Frequency	40	55	80	[KHz]	(Ta=25°C) Note 1
ViCFL (25°C) (reference)	CCFL Ignition Voltage	1100	-	-	[Volt] rms	(Ta=25°C) Note 3
ViCFL (0°C) (reference)	CCFL Ignition Voltage	1450	-	-	[Volt] rms	(Ta=0°C) Note 3
VCFL	CCFL Discharge Voltage	-	645 (@6.5mA)	710 (@2.5mA)	[Volt] rms	(Ta=25°C) Note 2
PCFL	CCFL Power consumption @ 8mA (excluding inverter)	-	8.5	11	[Watt]	(Ta=25°C) Note 2
Lamp life		50,000	-	-	[Hrs]	Ambient temp 20°C ~35°C (with no wind) Note 4

Note 1: CCFL Frequency should be carefully determined to avoid interference between inverter and TFT LCD

Note 2: Calculator value for reference ($IRCFL \times VCFL \times 2 = PCFL$)

Note 3: CCFL inverter should be able to give out a power that has a generating capacity of over 1450 voltage.
Lamp units need 1450 voltage minimum for ignition

Note 4: CCFL life time 50,000hr at 6.5mA. It's defined as the brightness of A point of lamp becomes 50% of the initial brightness. It's recommended not to exceed 6.5 mA for CCFL life time concern and it's prohibited to exceed 8.5 mA for safety concern.



10.0 Vibration, Shock, and Drop

10.1 Vibration & Shock

The module shall work error free after following vibration and shock condition. Likewise the module shall not sustain any damage after vibration and shock test.

10.1.1 Vibration Test Spec:

- I Frequency: 10 - 200Hz
- I Sweep: 30 Minutes each Axis (X, Y, Z)
- I Acceleration: 1.5G(10~200Hz P- P)
- I Test method:

Acceleration (G)	1.5
Frequency (Hz)	10~200~10
Active time (min)	30

10.1.2 Shock Test Spec:

Acceleration (G)	50
Active time(ms)	20
Wave form	Half-sin
Times	1

- I Direction: $\pm X$, $\pm Y$, $\pm Z$

10.2 Drop

Package test: The drop height is defined as 60 cm.

- (1 corner,3 edges,6 flat faces)
- No damage and defect found for panel.



11.0 Environment

The display module will meet the provision of this specification during operating condition or after storage or shipment condition specified below. Operation at 10% beyond the specified range will not cause physical damage to the unit.

11.1 Temperature and Humidity

11.1.1 Operating Conditions

The display module operates error free, when operated under the following conditions;

Temperature	0 °C to 50 °C
Relative Humidity	20% to 85%
Wet Bulb Temperature	39.0 °C

11.1.2 Shipping Conditions

The display module operates error free, after the following conditions;

Temperature	-20 °C to 60 °C
Relative Humidity	5% to 95%
Wet Bulb Temperature	39.0 °C

11.2 Atmospheric Pressure

The display assembly is capable of being operated without affecting its operations over the pressure range as following specified:

	Pressure	Altitude
Maximum Pressure	1040 hPa	0 m = sea level
Minimum Pressure	601 hPa	3658 m = 12,000 feet

Note: Non-operation altitude limit of this display module = 40,000 feet. = 12193 m.

11.3 Thermal Shock

The display module will not sustain damage after being subjected to 100 cycles of rapid temperature change. A cycle of rapid temperature change consists of varying the temperature from -20°C to 60°C, and back again.

Thermal shock cycle	-20 °C for 30min
	60 °C for 30min

Power is not applied during the test. After temperature cycling, the unit is placed in normal room ambient for at least 4 hours before powering on.



12.0 Reliability

This display module and the packaging of that will comply following standards.

12.1 Failure Criteria

The display assembly will be considered as failing unit when it no longer meets any of the requirements stated in this specification. Only as for maximum white luminance, following criteria is applicable.

Note: Maximum white Luminance shall be 75 cd/m² or more.

12.2 Failure Rate

The average failure rate of the display module (from first power-on cycle till 1,000 hours later) will not exceed 1.0%. The average failure rate of the display module from 1,000 hours until 10,000 hours will not exceed 0.70% per 1000 hours.

12.2.1 Usage

The assumed usage for the above criteria is:

- I 220 power-on hours per month
- I 500 power on/off cycles per month
- I Maximum brightness setting
- I Operation to be within office environment (25⁰C typical)

12.2.2 Component De-rating

All the components used in this device will be checked the load condition to meet the failure rate criteria.

12.3 CCFL Life

The assumed CCFL Life will be typically 50,000 hours under stable condition at 25±5 °C;

Standard current at 6.5 ± 0.5 mA

Definition of life: brightness becomes 50% or less than the minimum luminance value of CCFL.

12.4 ON/OFF Cycle

The display module will be capable of being operated over the following ON/OFF Cycles.

ON/OFF	Value	Cycle
+VDD and CCFL power	36,000	10 seconds on / 10 seconds off



13.0 Safety

13.1 Sharp Edge Requirements

There will be no sharp edges or corners on the display assembly that could cause injury.

13.2 Materials

13.2.1 Toxicity

There will be no carcinogenic materials used anywhere in the display module. If toxic materials are used, they will be reviewed and approved by the responsible AUO Toxicologist.

13.2.2 Flammability

All components including electrical components that do not meet the flammability grade UL94-V1 in the module will complete the flammability rating exception approval process. The printed circuit board will be made from material rated 94-V1 or better. The actual UL flammability rating will be printed on the printed circuit board.

14.0 Other requirements

14.1 Smoke Free Design

Any smoke nor strange smell shall not be observed by the operator at any single failure.

14.2 National Test Lab Requirement

The display module will satisfy all requirements for compliance to the following requirement:

UL 1950, First Edition	U.S.A. Information Technology Equipment
CSA C22.2 No.950-M89	Canada, Information Technology Equipment
IEC 950	International, Information Technology Equipment
EN 60 950	International, Information Processing Equipment (European Norm for IEC950)

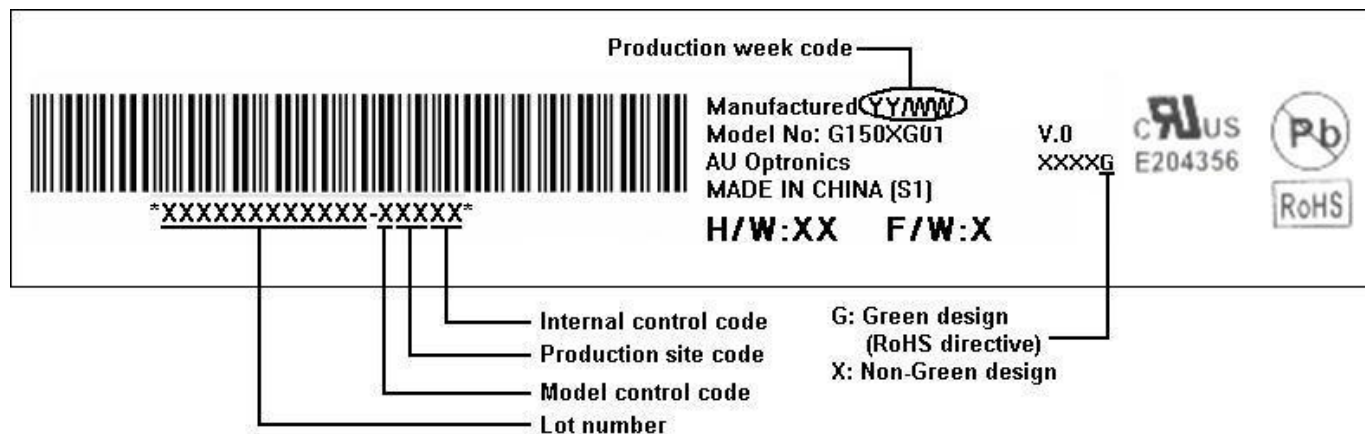
The construction of the display module is designed to suppress EMI. When mounted into a specified host system, the system will meet the following EMI requirement:

FCC Part 15 Class B
VCCI Class 2
CISPR 22, class B
Taiwan CNS standard
China CCIB standard

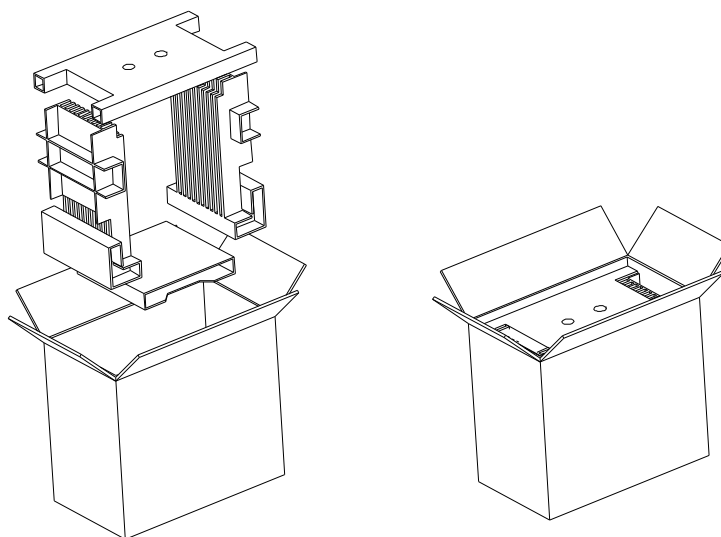


15.0 Label

Product Shipping Label (on the rear side of TFT-LCD module)

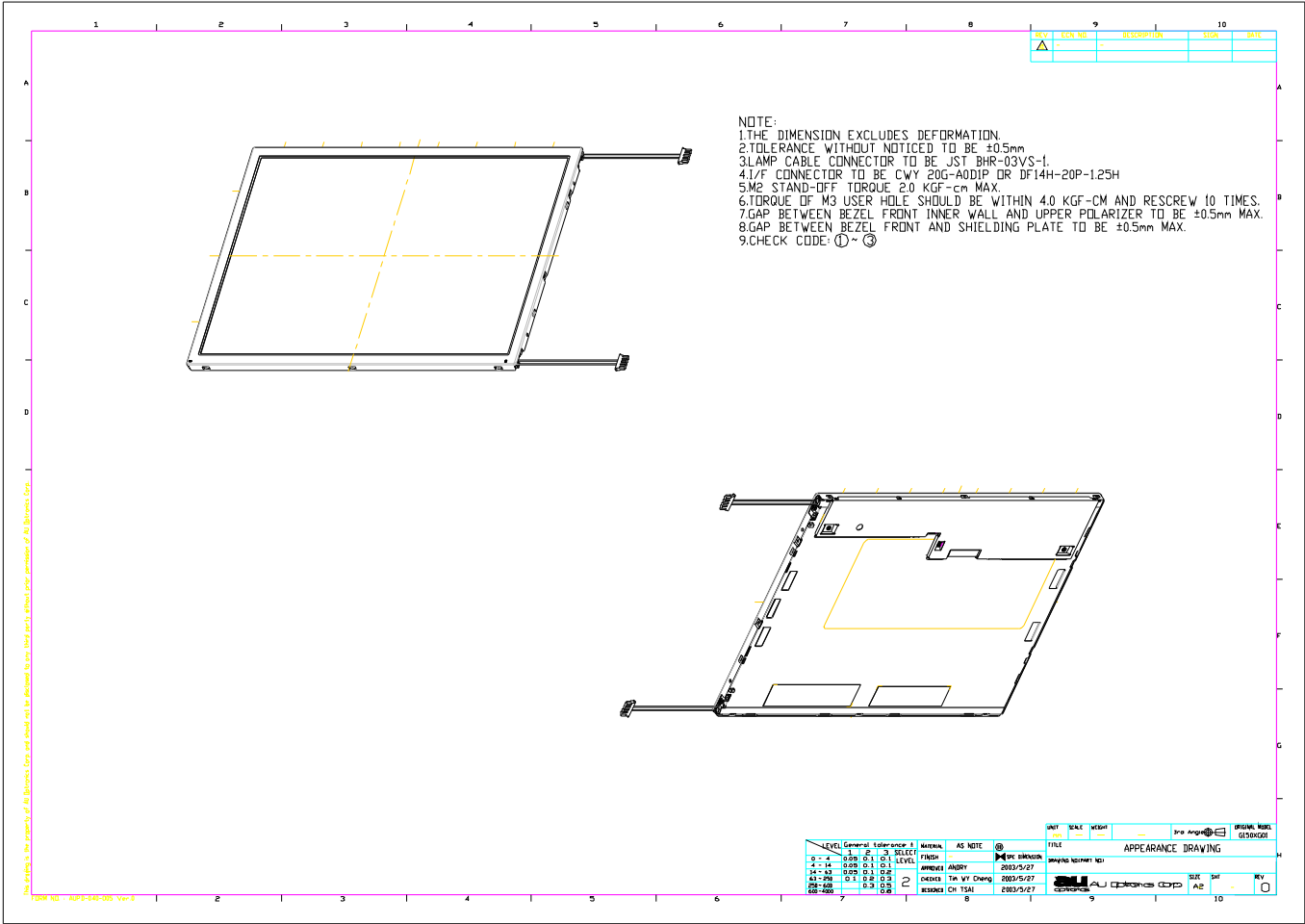


16.0 Carton Package



1. Max Capacity : 10 LCD module/Carton
2. Max Weight: 14kg/Carton
3. The outside dimension of carton is 401(L)mm x 323(W)mm x 353(H)mm

17.0 Mechanical Characteristics



(C) Copyright AU Optronics, Inc.

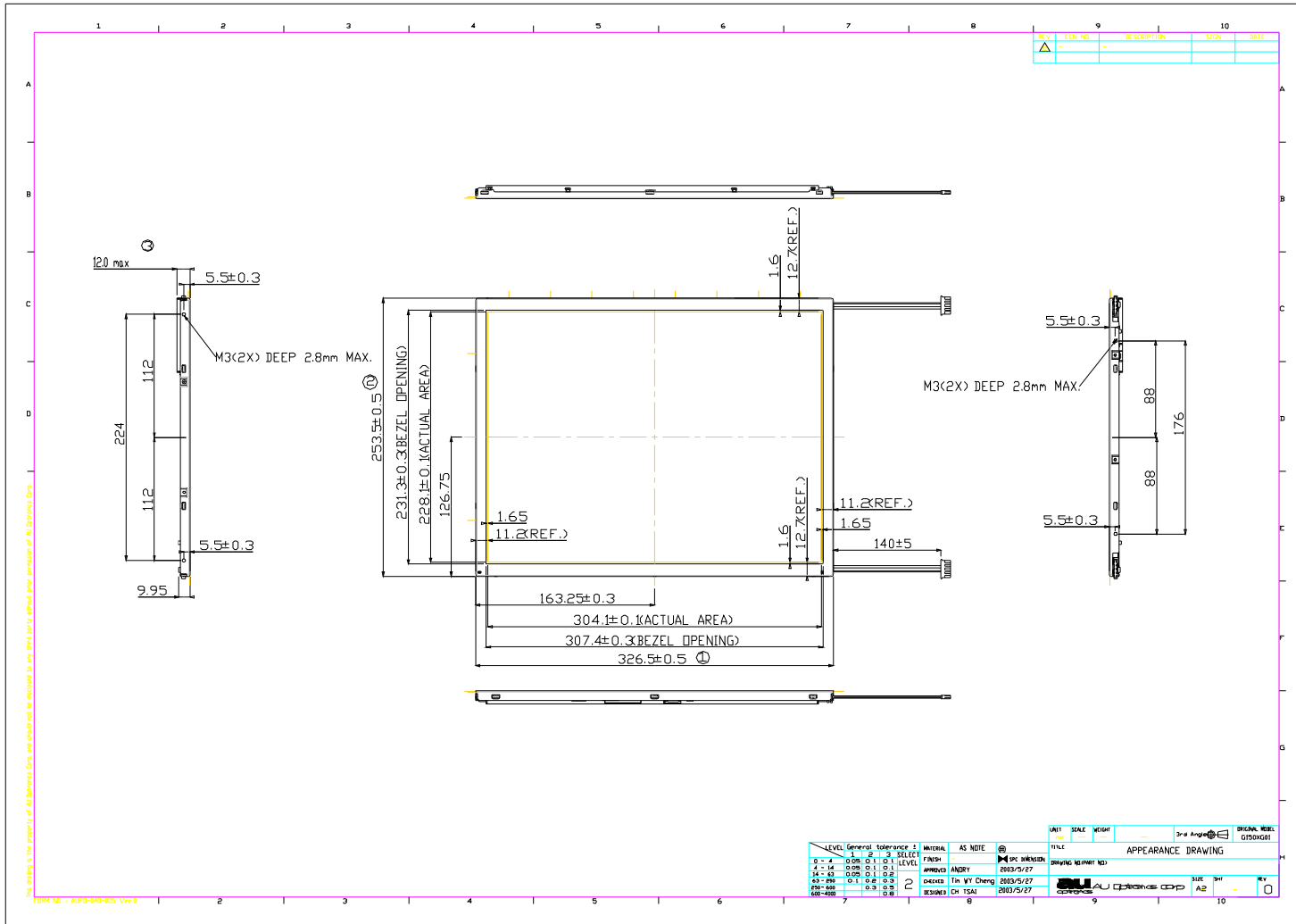
G150XG01 V.0

2006 All Rights Reserved.

Spec version 5.1

No Reproduction and Redistribution Allowed

G150XG01 V0 front and side view



(C) Copyright AU Optronics, Inc.

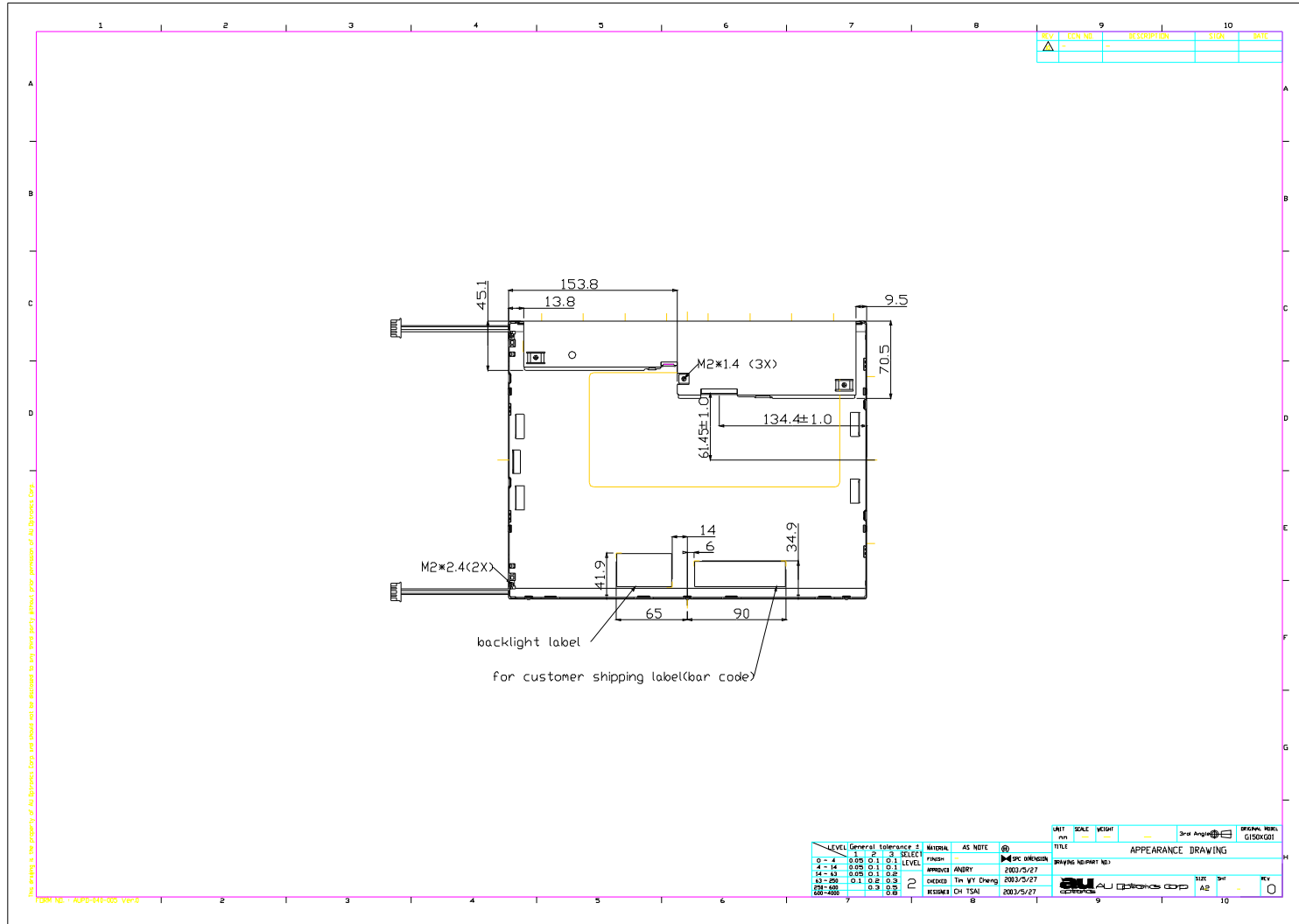
G150XG01 V.0

2006 All Rights Reserved.

Spec version 5.1

No Reproduction and Redistribution Allowed

G150XG01 V0 Rear View



(C) Copyright AU Optronics, Inc.

G150XG01 V.0

2006 All Rights Reserved.

Spec version 5.1

No Reproduction and Redistribution Allowed